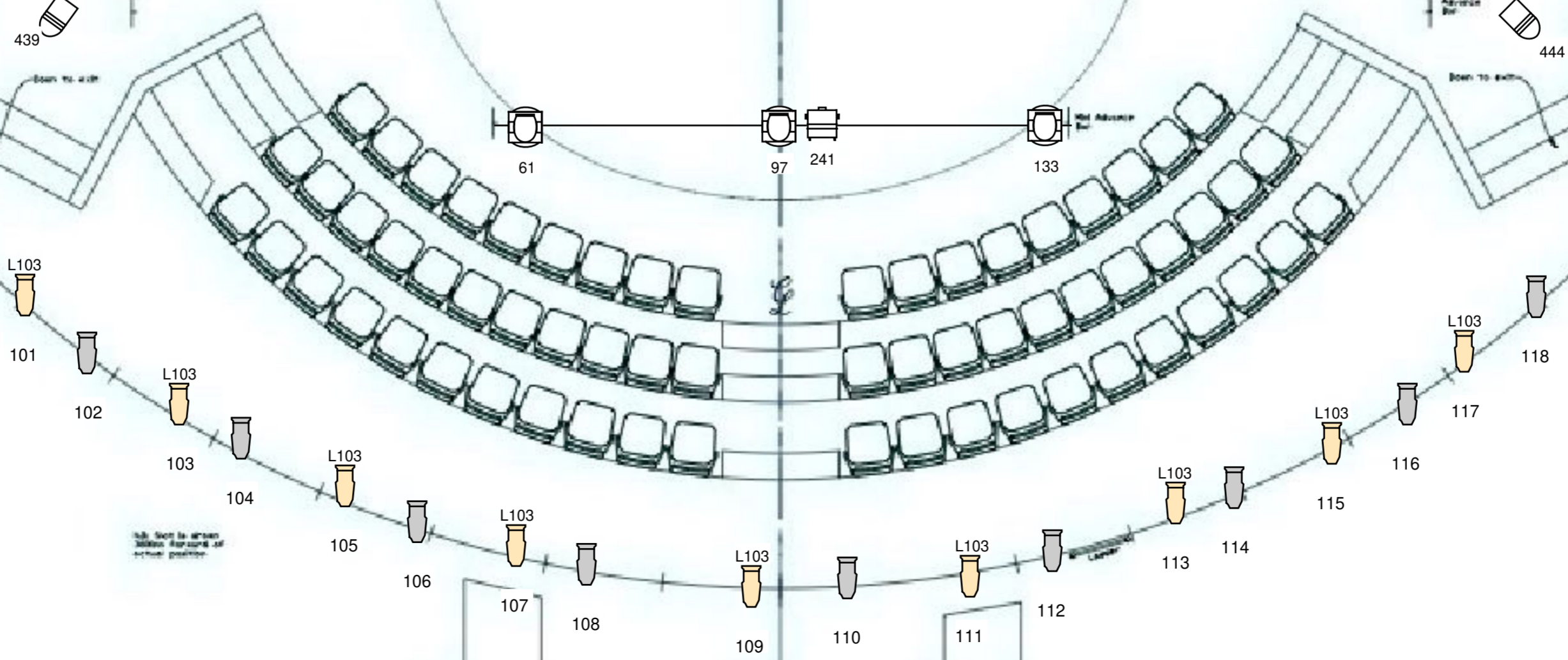
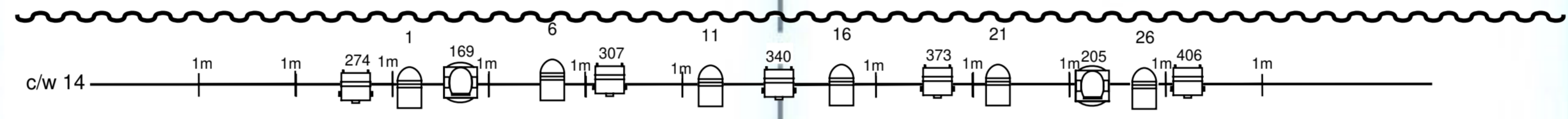
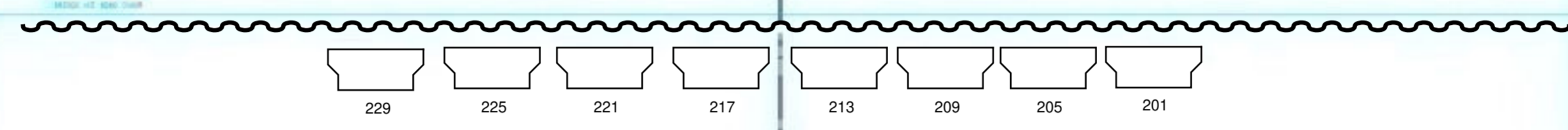
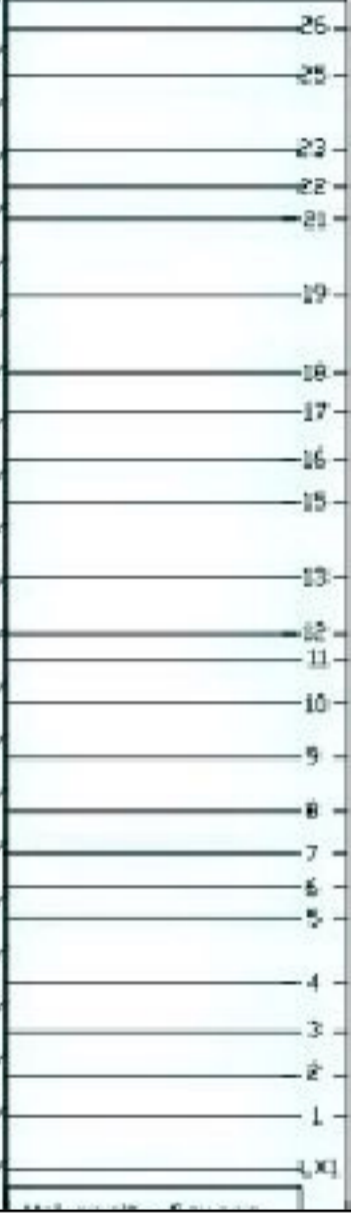
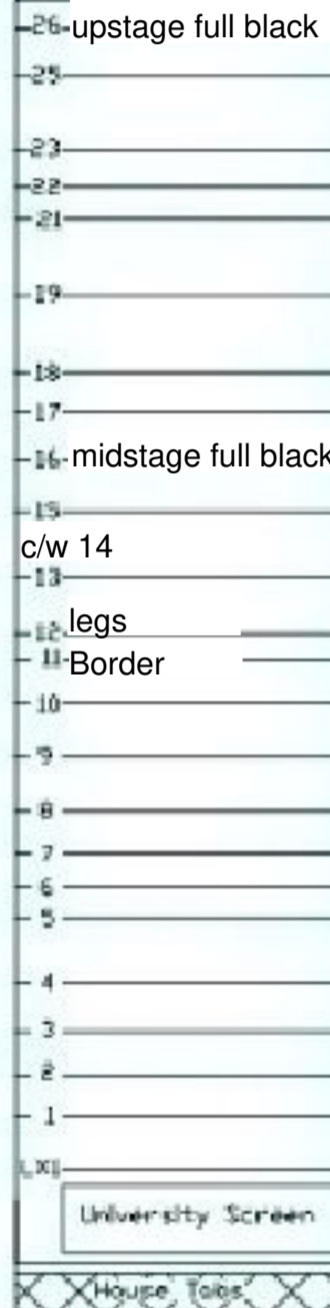


Double Ratchet Counterweight system operates from one side  
 Breaks or grip are often moved to give things the best possible grip contact on the cables



- source4 par (cp60)
- source4 19"
- 18/30 Source 4 zoom
- ETC Coloursource Par DB (5ch)
- Cameo pixbar 400 pro (4ch)
- Aryton Diablo (STD 36ch)
- Chauvet Outcast R2x wash (33ch)

