



Robin Hood

VISUAL STORY

Introduction

This visual story will let you know exactly what happens in our show Robin Hood.

We'll be going over:

- The cast
- The characters (including some very special squirrels!)
- The set
- The story (warning: this section contains spoilers!)
- Any moments in the show that may be a little bit louder or more unexpected than others. There aren't many, but we want you to know when they are.

If you would like to visit the Northcott, see the set and meet the company before you come to the show, please call us on 01392 72 63 63 or email us at access@exeternorthcott.co.uk and we'll do our best to make this happen.

If there is anything else that you would like to know about the show that we don't cover in this visual story, please get in touch at boxoffice@exeternorthcott.co.uk and we'll try to help as best we can.

The Cast

There are 9 actors in Robin Hood.

Al, Matt and Nick from Exeter-based theatre company Le Navet Bete are joined by Matthew, Molly, Jodie, Samara, Victoria and Yñaqui.

Le Navet Bete have been making shows together for over 10 years, but Robin Hood is the first time that they have collaborated with actors outside of their company.

The actors are supported by the Northcott's technical team. Our technicians make sure that the show runs safely and smoothly, but you probably won't see them on stage. Some of our technicians sit in the technical box, behind your seats, where they operate the lights and the sound. Other technicians will be above and at the sides of the stage, helping to raise or lower curtains, move scenery, and help actors change costumes during the show.



Victoria Boyce
Actor



Nick Bunt
Actor



Molly Cheesley
Actor



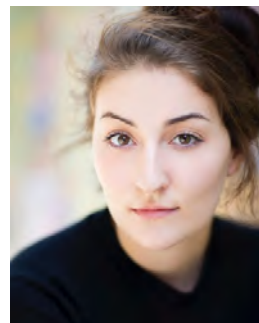
Al Dunn
Actor



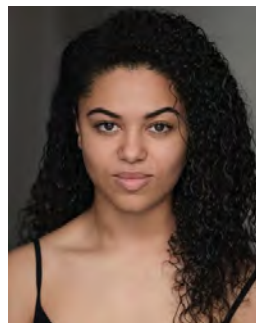
Matt Freeman
Actor



Matthew Heywood
Actor



Jodie Micciché
Actor



Samara Rawlins
Actor



Yñiqui Tuason-Inocian
Actor

The Characters

The 9 actors play 12 different characters in Robin Hood.

They will be wearing lots of different costumes and speaking in lots of different accents (some accents are more questionable than others...).

You can learn more about the main characters that each of the actors play in Robin Hood below.

You can also learn about the minor characters in the play. They may only appear once or twice on our stage for a short amount of time.

Robin Hood Characters (in order of appearance)

Nick Bunt plays one main character, the mystical **Merlin**.

Merlin is an old wizard, who enlists Robin and Marion to help him stop his sister Morgana and the Sheriff of Nottingham from cutting down the oldest oak tree in Sherwood Forest, thus protecting the throne.

Merlin wears lots of disguises and speaks in silly accents throughout the show to sneak into places he really shouldn't be in.



Jodie Micciché plays one main character, the mysterious **Morgana**.

Morgana is a powerful young sorceress who has stolen a magical amulet from her brother Merlin, weakening his powers, and wants to cut down the oldest oak tree in Sherwood Forest and take the throne.

Morgana likes nothing more than turning people into frogs.



Matthew Heywood plays one main character, the titular hero **Robin**.

Robin is a headstrong adventurer who lives together with his sister (and band mate) Bluebell with their adoptive family of squirrels in Sherwood Forest. He falls in love with Marion and will do everything he can to stop the Sheriff of Nottingham marrying her. Robin and Bluebell guard the oldest oak tree in Sherwood Forest.



Victoria Boyce plays one main character, the ever-chipper **Bluebell**.

Bluebell plays in a band with her brother Robin. She has picked up some distinctly squirrely behaviour from living in Sherwood Forest for a bit too long.



Samara Rawlins plays one main character, the quick-witted **Marion**.

Marion is kidnapped by the Sheriff of Nottingham, who intends to marry her. Marion has other plans. She teams up with Bluebell, Nanny Fanny, Merlin and Robin to stop the Sheriff and Morgana from taking the throne.



Al Dunn plays one main character, the dastardly **Sheriff of Nottingham**.

Pathetic. Self-indulgent. Weak-minded. A few words that you will come to associate with the Sheriff of Nottingham, an evil man who wants to tax anything that moves (and more!) and snatch the throne of his brother King Richard.



Matt Freeman plays one main character, the clumsy but loveable dame **Nanny Fanny**.

Nanny Fanny is Marion's right-hand woman. She has been a nurse to the Royal Household for longer than she can remember. Fanny also has a bright blue horse called Chestnut.

Like Merlin, Fanny also wears lots of different costumes throughout the show.

Molly Cheesley plays two minor characters, **Barry the Guard** and **Heidi A. Corn (squirrel)**.

Yñaqui Tuason-Inocian plays three minor characters, **Gary the Guard**, **Baron von Nutburger (squirrel)** and **Fluffy the Dragon**.

The actors are joined by three small squirrel hand-puppets, Nutkin, Scrat and Tufty.



The Set



The Robin Hood set was designed by pan-arts organisation Wiltshire Creative.

The set has a couple of backdrops (showcloths). These help to give the idea that the stage is larger than it really is.

The first showcloth is a painting of a forest and the second is a star map.

The sides of the stage are lined with trees that reach up to the top of the ceiling. The trees have lights built into them which are turned on during the show.

The floor of the set features brown and orange shapes that are arranged as a spiral in the centre of the stage.

There are also several pieces of scenery (set pieces) that are brought onto and taken off the stage during the show to help give the idea of different spaces in the story. These set pieces are built on wheels and will be moved around by the performers and / or technicians.

The first set piece in the show is a tall red and grey castle tower with a drawbridge that lowers and rises. The castle tower is joined by a red and grey castle wall. Both the castle tower and castle wall have lights built into them that are turned on during the show.

The second set piece in the show is a large brown and orange tree that matches the set floor. The tree has a green wooden door which actors use to move in and out of the tree. There are also two lanterns either side of the door that light up during the show. The tree is topped with a platform that actors climb onto during the show via two green ladders on either side of the tree.

The third set piece in the show is a laboratory desk used by Morgana to mix potions. The laboratory desk is blue.

About the show

How long is Robin Hood?

Robin Hood is performed in two parts with a short break (interval) in the middle so that you can grab a drink from our theatre café, pop to the loo or stretch your legs. The first half of the show is approximately 90 minutes long. The interval lasts around 20 minutes. The second half of the show is approximately 60 minutes long. The total length of Robin Hood, including the interval, is 150 minutes, or 2 hours and 30 minutes.

How do we tell the story of Robin Hood?

Robin Hood is a pantomime show. This means that, at times, the actors will talk directly to the audience and help explain what is happening on stage. There will also be moments when the actors ask the audience to be part of the show. They could ask you to join them on stage, to make sounds or respond to their questions.

Robin Hood – Scene by scene

We warned you! The following section contains spoilers for Robin Hood. If you would like to keep the show a surprise, do not read any further.

ACT 1

Scene 1

Morgana tells Merlin that she has stolen his magical amulet – and therefore his magical powers. Morgana plans use her new powers to cut down the oldest oak tree in Sherwood Forest, as a legend says that doing so will topple the throne of King Richard. Morgana wants to make the Sheriff of Nottingham king instead.



Scene 2

Robin and Bluebell perform music in front of Nottingham castle. Two castle guards confiscate Robin and Bluebell's instruments and threaten to throw them into jail.

Merlin, disguised as Friar Tuck, interrupts the guards and casts a magical spell on them so that they let Robin and Bluebell go.

The guards then catch Marion, who has escaped from the castle. Robin interrupts the guards and tries to cast the same spell as Merlin, but it does not work.

The castle tower drawbridge lowers, and the Sheriff of Nottingham walks out playing 'Joker and the Thief' on an electric guitar. Robin pulls out the audio cable from the guitar and the music stops.

The Sheriff announces lots of new taxes for the people of Nottingham but has trouble convincing everyone that his reforms are a good idea.

Robin offers to help him. He and Bluebell begin to clap and stomp along to the tune of 'We Will Rock You'. Bluebell rolls out a large drum and starts banging it. Robin starts singing and the Sheriff realises that Robin is making fun of him. Robin steals the Sheriff's electric guitar and the two wrestle for control over it.

Morgana enters and asks where Marion is. Merlin tries to scare Morgana away from Sherwood Forest by telling her the legend of 'Robin Hood' and his band of outlaws.

After Morgana and the Sheriff leave, Merlin reveals to Robin and Bluebell that he was disguised as Friar Tuck. The three of them agree to protect the oldest oak tree in Sherwood Forest from Morgana and the Sheriff and leave the stage.

Nanny Fanny bursts onto stage riding a blue horse, Chestnut. Marion then runs onto stage, chased by the guards. Marion tells Fanny that she doesn't want to marry the Sheriff and they sing a medley of 'I'm Gonna Be' and '500 Miles'.

Scene 3

Robin and Bluebell walk back to the oldest oak tree in Sherwood Forest. Bluebell has doubts they can trust Merlin, but Robin convinces her they can. Bluebell also realises that Robin is in love with Marion. They agree to stop the Sheriff marrying her.

Scene 4

The Sheriff interrupts Morgana mixing potions in her laboratory. The Sheriff complains that Marion does not want to marry him, and Morgana tries to boost the Sheriff's confidence. They sing 'Rule the World' together. The Sheriff agrees to help Morgana cut down the oldest oak tree in Sherwood Forest.

The guards enter holding Marion and Fanny. The Sheriff tries to woo Marion, but she rejects him. Nanny then argues with Morgana and the Sheriff about their treatment of Marion. The Sheriff agrees to let Marion hunt in Sherwood Forest.

Scene 5

Bluebell guards the oldest oak tree in Sherwood Forest by herself. She sings 'They Don't Know'.

Robin enters carrying a large sack. The squirrels emerge from the trees. Robin opens the sack and a single acorn falls out. Robin encourages the squirrels to leave and look for more acorns.

Merlin enters disguised as Little John. He tests whether Robin and Bluebell can defend the oldest oak tree in Sherwood Forest.

Scene 6

Robin asks the audience to throw acorns at the guards if they see them. The guards enter and Robin encourages the audience to throw their acorns at them.



Scene 7

Marion enters carrying a bow and arrow. She sings 'Evergreen'. Robin startles her. Robin tells Marion that he is guarding the oldest oak tree in Sherwood Forest and that he is helping Merlin retrieve the magical amulet.

Marion offers to show Robin how to use a bow and arrow. Bluebell enters and asks an audience member to come onto the stage. She asks the audience member to pretend to be a tree stump and places an apple on their head.

Robin fires an arrow from the bow. Bluebell holds the arrow and moves in slow motion towards the apple on the audience member's head. The arrow hits the apple.

Marion is convinced that Robin is a great archer and tells him that she will ask the Sheriff to host an archery competition at the castle, so that Robin can sneak in. They leave.

Fanny, disguised as a tree, enters. She tells the audience that she has been watching Marion to make sure that she is safe.

Merlin, disguised as a bush, enters. Fanny and Merlin spot each other. They sing '(Everything I Do) I Do It For You' and admit they love each other.

The showcloth comes down, but Merlin steps the wrong way and gets trapped in the next scene.

Scene 8

The guards enter and announce that the Sheriff will host an archery competition at the castle.



Scene 9

The guards invite an audience member to come on stage take part in the archery competition. Marion also persuades the Sheriff to let Robin, disguised in a hood and cape, compete.

Merlin enters disguised as Little John on stilts. He spots Morgana wearing the amulet and sneaks around the stage to steal it without her noticing.

Fanny gives the audience member a bow and arrow. The audience member fires the arrow at an archery target, but the Sheriff moves the arrow to make the shot look bad.

Morgana gives the Sheriff a bow and arrow. He shoots the arrow and hits the bullseye on the archery board.

The Sheriff declares himself the winner of the archery competition. Marion intervenes, asking that Robin at least to be given a chance.

Robin produces a bow and arrow from under his cape. He shoots and the arrow splits the Sheriff's arrow in two. Marion declares Robin the winner of the archery competition.

The Sheriff pulls off Robin's hood and recognises who he is.

Merlin, now directly behind Morgana, snatches the amulet.

The sing 'Tubthumping' and fight. Morgana retrieves the Amulet from Merlin and says that she will cut down all of Sherwood Forest.

ACT 2

Scene 1

Merlin re-caps the events of Act 1.

The Sheriff and Fanny enter stage. The Sheriff realises that Merlin and Fanny have been secretly in love for years.



Scene 2

While protecting the oldest oak tree in Sherwood Forest, Robin, Bluebell and the squirrels sing and dance to 'Rockin' Robin'.

Merlin and Marion enter.

Robin introduces Marion to the squirrels and shows her his guitar. Bluebell asks that Robin teach her how to play guitar.

Bluebell then acknowledges that their plan to retrieve the amulet failed.

Bluebell and the squirrels exit the stage, leaving Robin and Marion alone.

Robin offers to teach Marion to play guitar. The instrument is too big for Marion. Robin gives her a ukulele to play instead. Robin and Marion begin to play 'Beautiful'.

Bluebell re-enters, with Robin and Marion unaware, asking Robin to teach her how to play guitar again. She sees Robin and Marion playing guitar and singing together and leaves.

Scene 3

The Sheriff tries to calm Morgana down in her laboratory.

To locate the oldest oak tree in Sherwood Forest, the Sheriff suggests that he seduce Fanny and get her to drink a hot chocolate with a truth serum in it.

The Guards bring Fanny into the laboratory. The Sheriff flirts with Fanny, but she rejects his offer of hot chocolate.

Morgana enters and tells Fanny that the amulet is hidden in a cave under Nottingham castle and guarded by a dragon.

Morgana and the Sheriff let Fanny go, with the intention that she will travel to the outlaws hiding spot in the oldest oak tree in Sherwood Forest to tell them where the amulet is. Morgana and the Sheriff follow her.

Scene 4

Fanny arrives at the oldest oak tree in Sherwood Forest. Marion introduces Fanny to Robin and Bluebell.

Morgana and the Sheriff enter. The Sheriff is carrying a pressure sprayer marked with a skull and crossbones symbol.

Bluebell tries to grab the pressure sprayer, but Morgana throws her to the ground. Morgana then sprays the tree with the pressure sprayer. The tree dies.

Morgana and the Sheriff exit.

Robin begins to sing 'Things Can Only Get Better', which the rest of the cast join in singing.

They agree to sneak into the cave under Nottingham castle to steal the amulet.

Scene 5

Robin, Marion, Bluebell, Fanny and Merlin steal the keys to the cave door from a sleeping guard.

They ask an audience member to watch the Guard while holding a big stick, and if the Guard wakes up, to hit them on the head.

The Guard wakes up and the audience member hits them on the head. This happens twice.

Scene 6

Robin enters the cave cautiously, followed even more cautiously by Marion, Bluebell, Fanny and Merlin.

They search the cave for the amulet, wary of disturbing the dragon.

They hear a huge roar as Fluffy the Dragon enters the stage, followed by Morgana and the Sheriff.

Robin asks where the amulet was. Morgana tells him that it was in the theatre auditorium the whole time. Robin, Bluebell, Merlin and Fanny rush into the auditorium to find the amulet. Robin asks the audience to help them find the amulet as well.

Robin, Marion, Bluebell, Fanny and Merlin start singing 'Holding Out For A Hero'.

The Sheriff tries to attack Robin with a dagger. Robin grabs the dagger, and they struggle for it.

Bluebell finds the amulet and tries to give it to Merlin, but it ends up in the hands of the Sheriff.

The Sheriff gives the amulet to Merlin. Nanny takes control of Fluffy.

Morgana begs for another chance to prove she isn't evil, but Merlin transforms her into a frog.

The Sheriff takes Fluffy away, leaving the outlaws to celebrate their victory.

Merlin and Fanny agree to get married. Fanny reveals that Robin and Bluebell are her son and daughter respectively.

Bluebell picks up the Sheriff's electric guitar and starts playing. She's a natural. The cast start singing 'Johnny B. Goode'.

Scene 7

Fanny enters and asks the audience to help her come up with a suitable punishment for the Sheriff.

Fanny invites for audiences members on stage to sit on a log, and encourages the audience to sing 'Speckled Frog On A Log'.

The Sheriff enters wearing a Frog costume. Fanny makes him eat bugs and asks him to jump into a pool of water.

Fanny then chases the Sheriff around the auditorium with a water gun.

Scene 8

The cast sing and dance to 'You Make My Dreams (Come True)' outside Nottingham castle.

Moments in Robin Hood that you might want to know about

Noises

There are a few moments in the first and second half which are a little bit louder than others. We've listed these moments below. Don't worry, it's ok to cover your ears at these points. We have told you below which lines they happen after.

ACT 1

Scene 1 – Entrance of Morgana

There is a loud clap of thunder as Morgana enters.

Scene 2 – Entrance of Sheriff

There is a loud hiss when Robin unplugs the Sheriff's guitar.

Scene 2 – Entrance of Morgana

There is a loud clap of thunder as Morgana enters.

Scene 4 – Morgana leaves

There is a loud clap of thunder as Morgana leaves her laboratory.

ACT 2

Scene 6 – Entrance of Fluffy the Dragon

There are a series of loud roars before, during and after Fluffy the Dragon enters.

Scene 6 – Morgana leaves

There is a loud hiss and clap of thunder when Morgana is turned into a frog.

Lighting changes

There are several moments where the lighting changes suddenly during the show. They are only very brief and don't last more than 10-20 seconds.

ACT 1

Scene 1 – Entrance of Morgana

There are flashing lights as Morgana enters.

Scene 2 – Entrance of Sheriff

There are flashing lights as the Sheriff enters.

Scene 2 – Entrance of Morgana

There are flashing lights as Morgana enters.

Scene 4 – Morgana leaves

There are flashing lights as Morgana leaves the laboratory.

ACT 2

Scene 6 – Entrance of Fluffy the Dragon

There are flashing lights as Fluffy the Dragon enters.

Scene 6 – Morgana leaves

There are flashing lights as Morgana is turned into a frog.

Audience Interaction

There are a few moments of direct audience interaction during the show. In certain moments of audience interaction, the actors will move off the stage and come out into the audience.

ACT 1

Scene 6

Robin encourages the audience to throw acorns at the guards.

Scene 7

Bluebell invites an audience member to put an apple on their head, which Robin will shoot off with an arrow.

Scene 9

Fanny invites an audience member to compete in the Sheriff's archery tournament.

ACT 2

Scene 5

Robin invites an audience member to hit a guard with a stick.

Scene 6

The cast run around the auditorium looking for the amulet.

Scene 7

Fanny chases the Sheriff around the auditorium with a water gun.

Haze

Haze, also known as light smoke, is used at various points during the performance. It is always very subtle and will not harm you.

ACT 1

Scene 2 – Entrance of Sheriff

There is haze as the Sheriff enters.

ACT 2

Scene 6 – Entrance of Fluffy the Dragon

There is haze as Fluffy the Dragon enters.