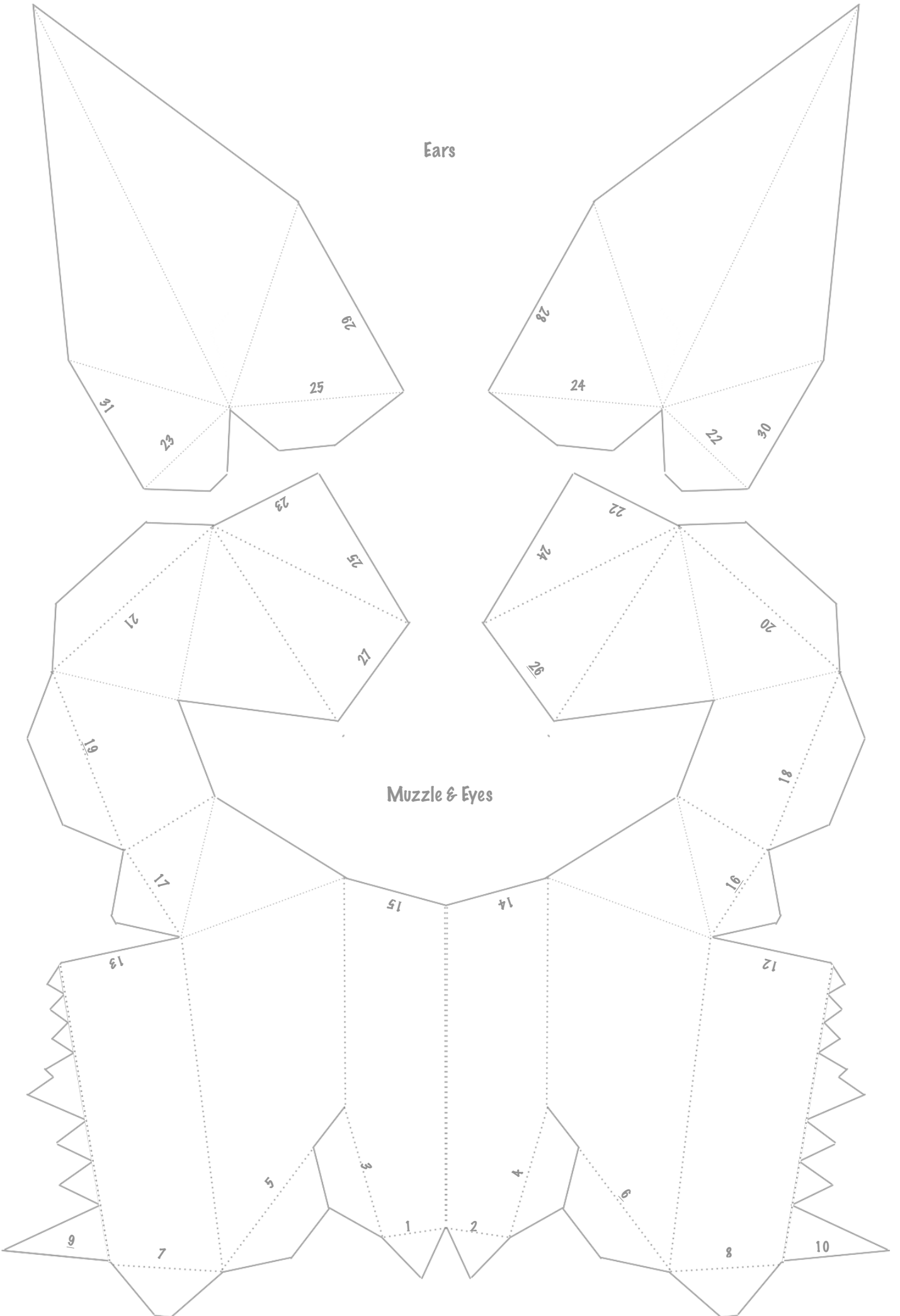
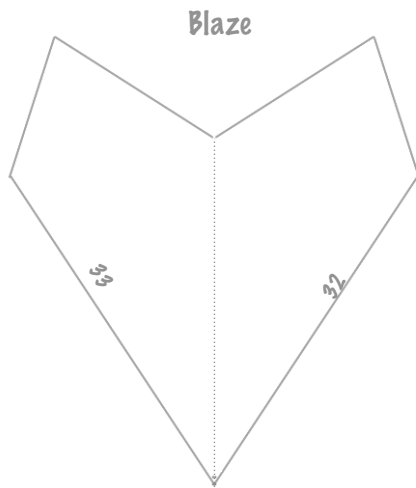
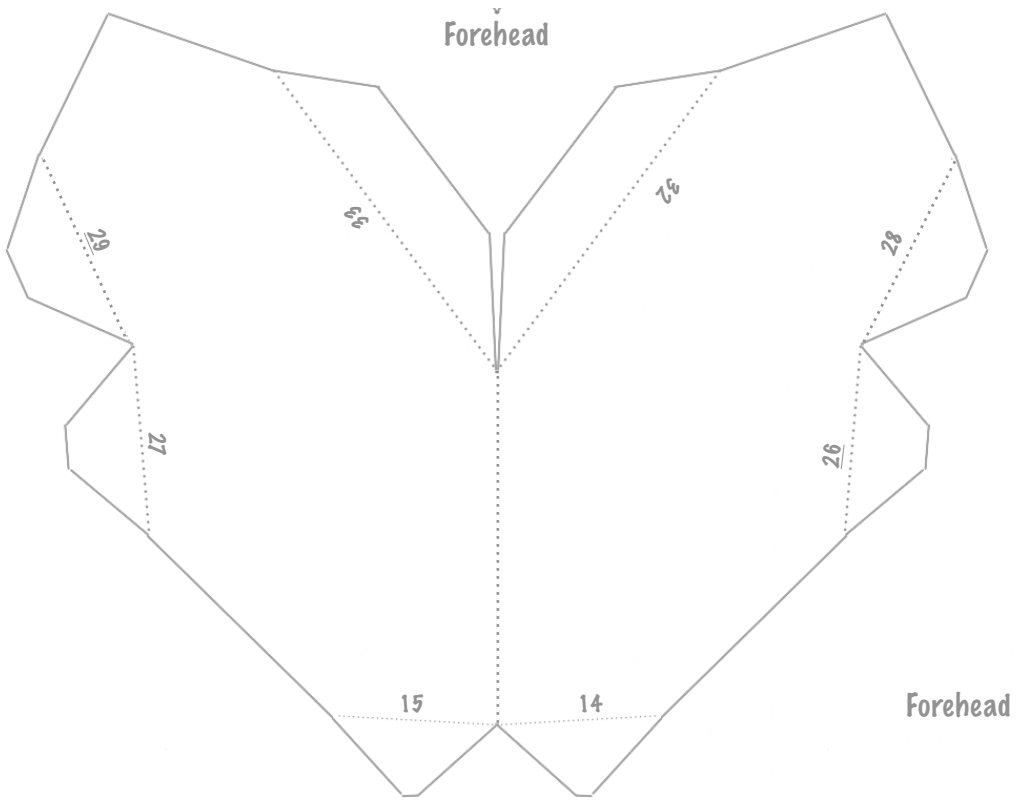
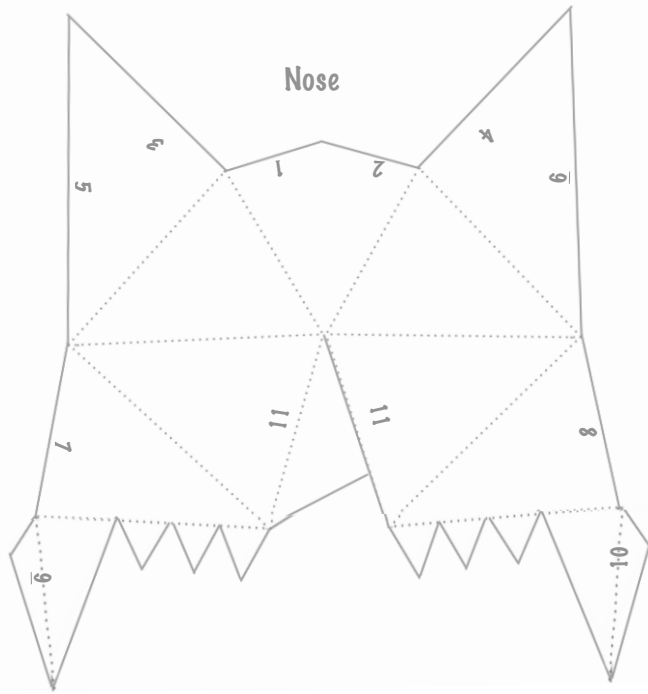


Ears





## Instructions

### Materials

- Ruler
- Scissors
- Glue
- Something to score along the fold lines with - an old empty pen works well
- Heavy paper or thin card (up to about the weight of a cereal box works well)
- String, ribbon or elastic (to make the mask easy to wear).

### Sizing

### Print at

100% scale for an adult male or 85% scale for children.

### Method

- Print onto card or print on paper and then paste onto the card.
- Cut out all the pieces following the solid lines.
- Use a ruler and scoring implement to score over the dotted lines.
- Fold all the pieces

do a valley fold for lines marked:



and a mountain fold for lines marked:



- Match up the twin number and glue the pieces together
- Add holes for elastic/string/ribbon where the stars are.
- Paint or decorate as you wish to cover the numbers.

